

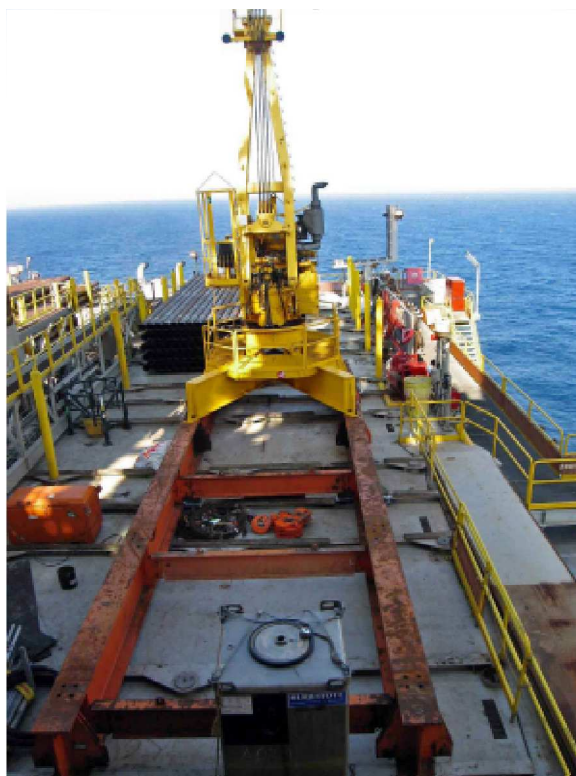


CRANES • DECK PANELS

★ RENTALS BY THE DAY OR BY THE MONTH ★



A PORTION OF THE BLAKE CRANE FLEET
AT ITS HOUMA, LA FACILITY



BULLFROG CRANE INSTALLED
OFFSHORE TO FACILITATE PLATFORM
CRANE REPLACEMENT

CRANES



DECK PANELS STORED AT THE HOUMA
YARD



DECK PANELS INSTALLED OFFSHORE
FOR BULK TANK INSTALLATION

DECK PANELS

Call today for more information

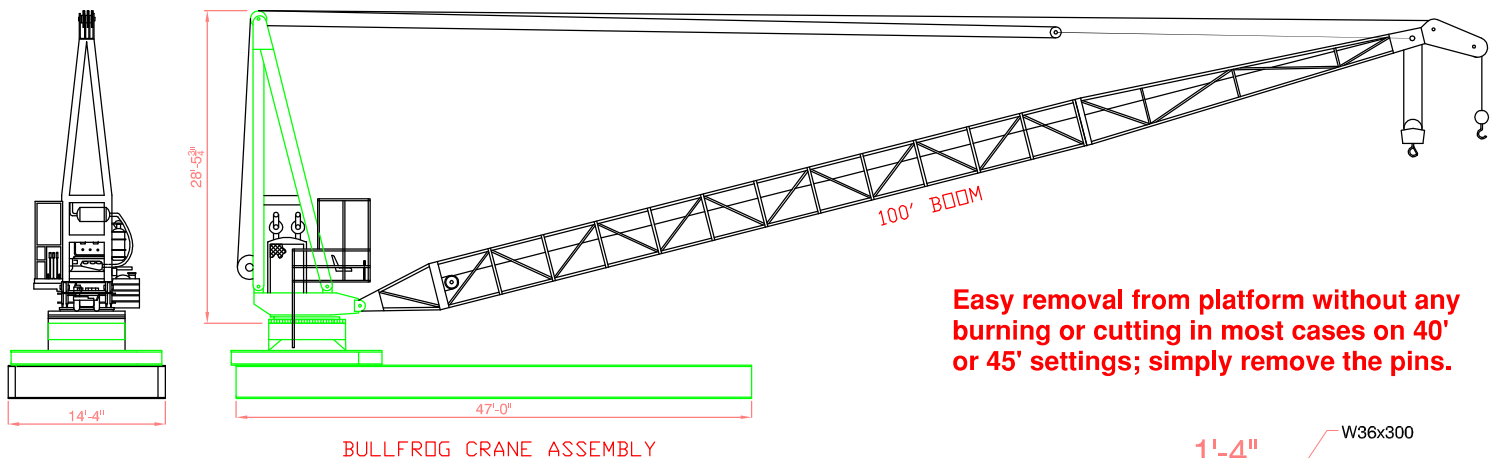
HOUMA

985.274.2200

HOUSTON

281.741.8553

- FOR YOUR OFFSHORE CONSTRUCTION NEEDS
- FOUR MODELS OF MARINE CRANES
- PANELS IN LENGTHS OF 46 FT. AND 60 FT.



LIFTING CAPACITY

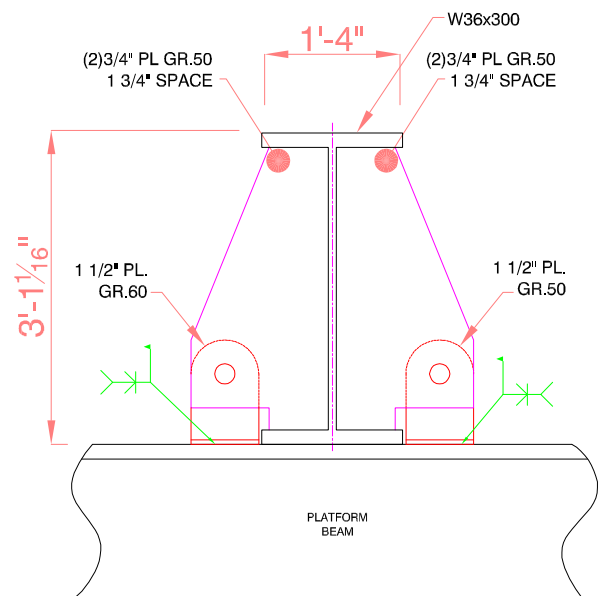
CRANE MFG. : WEATHERFORD AMERICAN AERO
 MODEL: BULLFROG
 BOOM LENGTH: 100'

MAIN HOIST ROPE: 7/8 DYFORM 18 OR SUPER FLEX PACK 19X19
 AUX. HOIST ROPE: 3/4 19X7
 MAIN LOAD BLK WEIGHT: 700 LBS

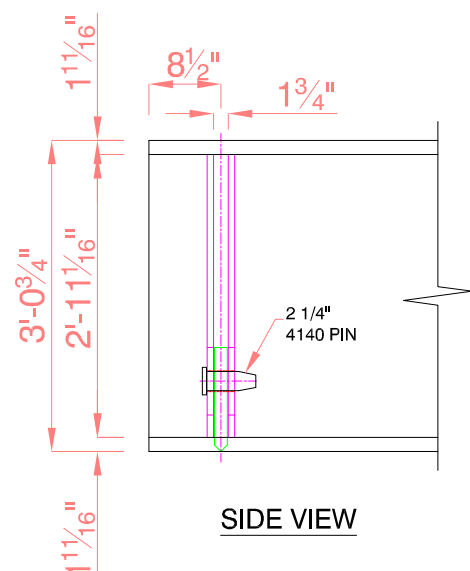
BOOM ANGLE	RADIUS OF LOAD	MAIN HOIST FOUR (4) PART LINE REEVING		AUX. HOIST STAT/ DYN
		STATIC CAPACITY	DYNAMIC CAPACITY	
80.8	20	60,650	54,500	9,600
76.5	25	59,746	50,712	9,600
74.9	30	56,999	42,600	9,600
71.9	35	48,288	32,111	9,600
68.9	40	41,660	27,703	9,600
65.8	45	36,465	24,249	9,600
62.6	50	32,286	21,470	9,600
59.3	55	28,849	19,180	9,600
55.9	60	25,975	17,273	9,600
52.4	65	23,534	15,650	9,600
48.7	70	21,436	14,250	9,600
44.7	75	19,614	13,043	9,600
40.5	80	18,016	11,980	9,600
35.9	85	16,603	11,041	9,600
30.7	90	15,345	10,204	9,600
24.5	95	14,218	9,455	9,600
16.2	100	13,202	8,845	9,600

CAPACITIES SHOWN ABOVE DO NOT INCLUDE WEIGHT OF HOOK BLOCK OR RIGGING; USE STATIC CAPACITY FOR LIFTING FROM OR LANDING ON THE PLATFORM. USE DYNAMIC CAPACITY FOR LIFTING FROM OR LANDING ON FLOATING VESSELS; PERSONNEL HANDLING LIMIT 3200 LBS.

Easy removal from platform without any burning or cutting in most cases on 40' or 45' settings; simply remove the pins.



ELEV. VIEW @ TIE-DOWN POINTS



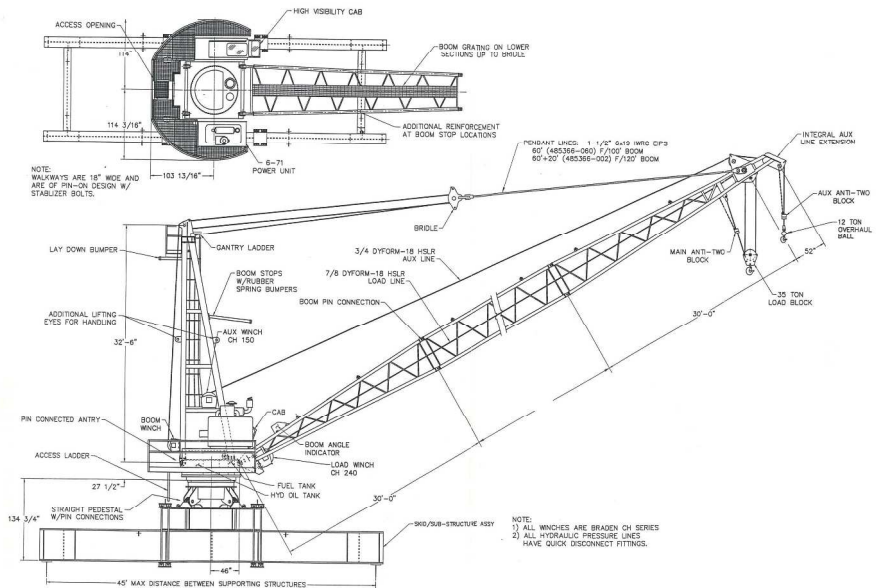
SIDE VIEW

HOUMA

985.274.2200

HOUSTON

281.741.8553

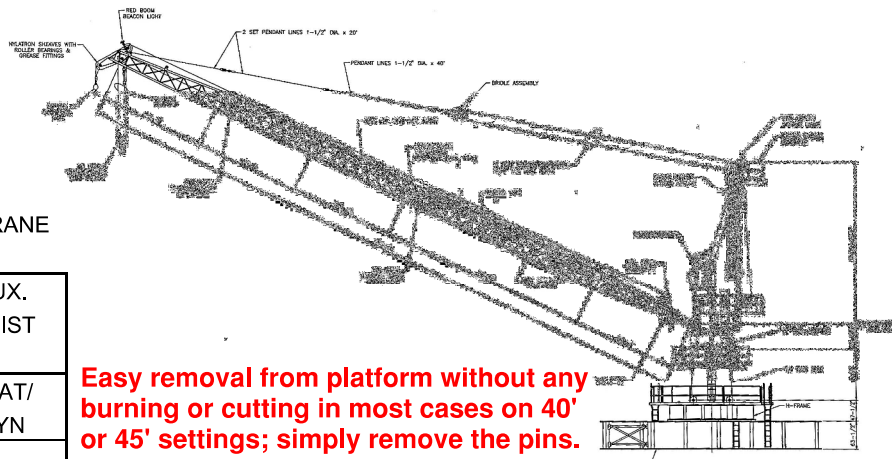


SIDE VIEW



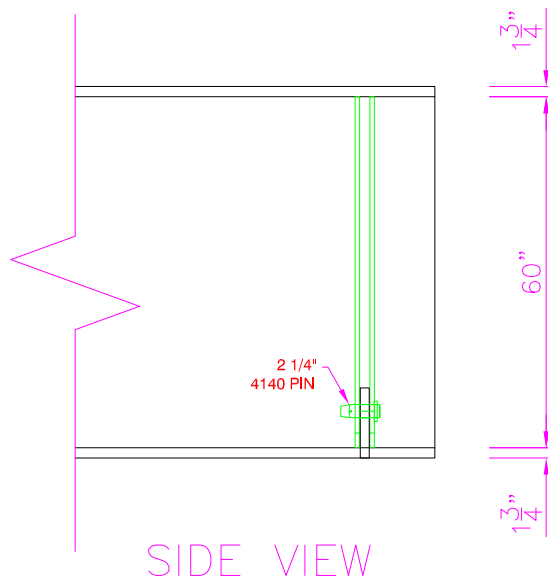
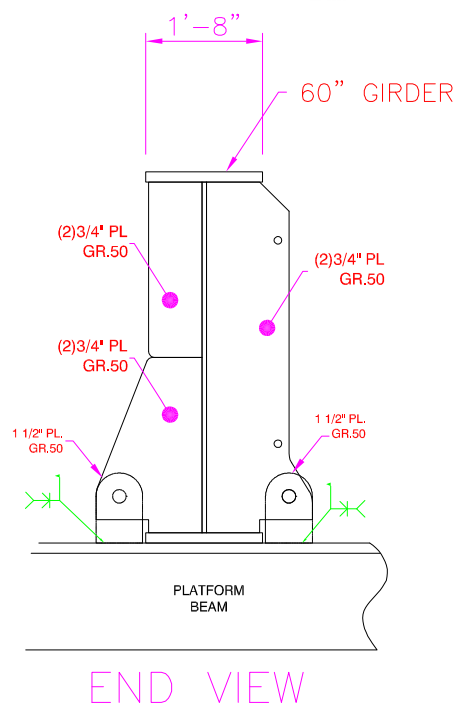
LIFTING CAPACITY

CRANE MFG: NAUTILUS MODEL: 250L-120 MARINE CRANE



Easy removal from platform without any burning or cutting in most cases on 40' or 45' settings; simply remove the pins.

BOOM ANGLE	RADIUS OF LOAD	MAIN HOIST		AUX. HOIST
		FOUR (4) PART LINE REEVING		STAT/ DYN
		STATIC CAPACITY	DYNAMIC CAPACITY	
83	19.6	68,230	50,938	STATIC = 12,215 DYNAMIC = 8,208 PERSONNEL LOADS LIMITED TO 3,902
82.8	20	68,230	50,762	
80	25	68,230	45,787	
78	30	59,081	38,771	
76	35	51,805	33,920	
73	40	46,363	30,292	
71	45	40,668	26,495	
68	50	36,144	23,479	
65	55	32,463	21,025	
63	60	29,409	18,989	
60	65	26,835	17,273	
57	70	24,636	15,807	
54	75	22,734	14,539	
51	80	21,074	13,433	
48	85	19,613	12,459	
45	90	18,315	11,593	
41	95	17,156	10,281	
37	100	16,114	10,126	
33	105	15,172	9,498	
29	110	14,316	8,927	
23	115	13,534	8,406	
16	120	12,771	7,897	
0	124	11,067	6,761	



- MAIN HOIST CAPACITIES ARE BASED ON FOUR PART REEVING OF 7/8" DIAMETER, SUPER FLEX PAK 19 OR EQUAL WIRE ROPE. (BREAKING STRENGTH = 87,600 LBS.)
- AUXILIARY HOIST CAPACITIES ARE BASED ON ONE PART REEVING OF 3/4" DIAMETER, SUPER FLEX PAK PR EQUAL WIRE ROPE. (BREAKING STRENGTH = 64,600 LBS.)
- SHEAVE EFFICIENCY IS INCLUDED.
- ALL RATINGS IN ACCORDANCE WITH API SPECIFICATION 2C (SPEC 2C), FIFTH EDITION, APRIL 3, 1995. A DYNAMIC COEFFICIENT (Cb OF 2.0 IS USED).
- THE ABOVE RATINGS ARE CONSIDERED NET RATINGS AS THE MAIN LOAD BLOCK WEIGHT OF 1,850 LBS. AND OVERHAUL BALL WEIGHT OF 405 LBS. HAVE BEEN SUBTRACTED.

HOUMA

985.274.2200

HOUSTON

281.741.8553



LIFTING CAPACITY

CRANE : TITAN 1200 MARINE CRANE

BOOM ANGLE	RADIUS OF LOAD	MAIN HOIST		AUX. HOIST
		FOUR (4) PART LINE REEVING		STAT/ DYN
(deg)	(ft.)	STATIC CAPACITY	DYNAMIC CAPACITY	7,800
82	MIN	74,700	71,275	
81	30.0	74,700	71,135	
78	35.0	74,700	69,750	
76	40.0	74,700	67,215	
74	45.0	74,700	62,370	
72	50.0	74,700	56,470	
69	55.0	74,700	50,785	
68	60.0	70,015	46,075	
65	65.0	64,070	42,110	
63	70.0	58,990	38,725	
61	75.0	54,605	35,805	
58	80.0	50,780	33,255	
56	85.0	47,415	31,010	
53	90.0	44,430	29,020	
51	95.0	41,765	27,245	
48	100.0	39,370	25,645	
45	105.0	37,205	24,205	
42	110.0	35,240	22,895	
39	115.0	33,450	21,700	
36	120.0	31,690	20,525	
32	125.0	29,775	19,250	
28	130.0	28,010	18,075	
22	135.0	26,370	16,980	
16	140.0	24,845	15,965	
HORIZ	MAX	21,110	13,470	

Main hoist = ch330a-69120-02 w/ 1,050' of 1" dyform - 18 wire Rope

Auxiliary Hoist = PD12C-29064-1 w/ 405' of 5/8" dyform - 18 HSLR Wire Rope

Main Hoist Load Block Weight = 1,800 lbs.

Reeved capacities shown above include the weight of the hook and block.

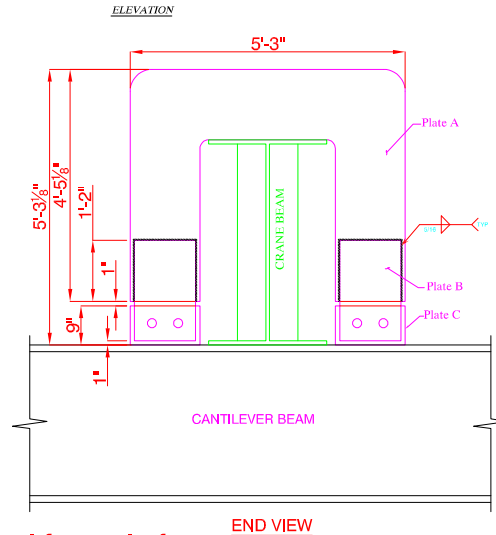
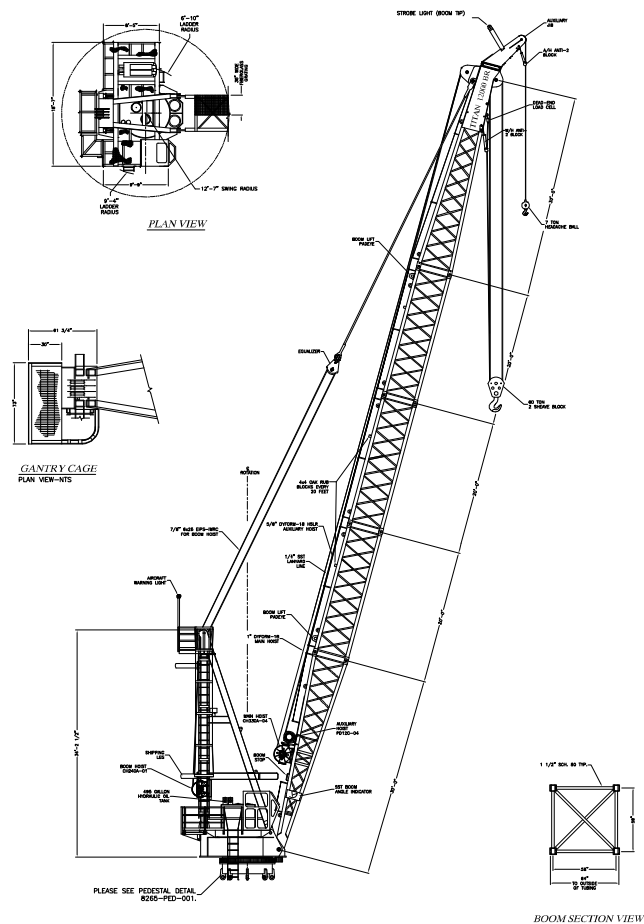
Dynamic capacities calculated with a constant Dynamic Coefficient (Cb) = 2.0

HOUMA

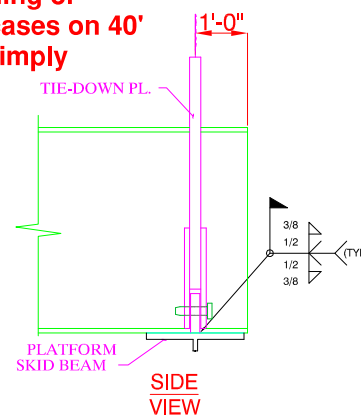
985.274.2200

HOUSTON

281.741.8553



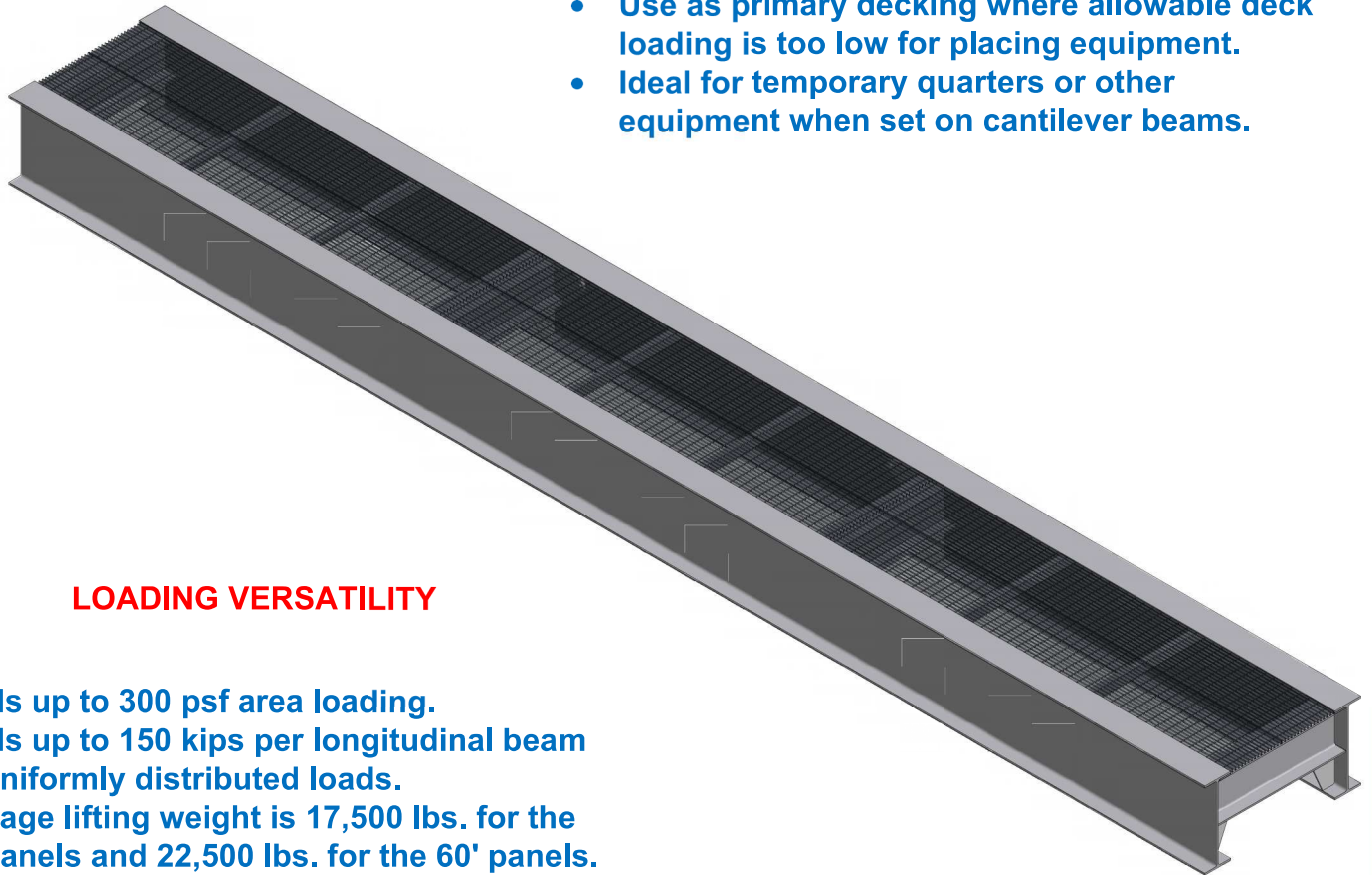
Easy removal from platform without any burning or cutting in most cases on 40' or 45' settings; simply remove the pins.





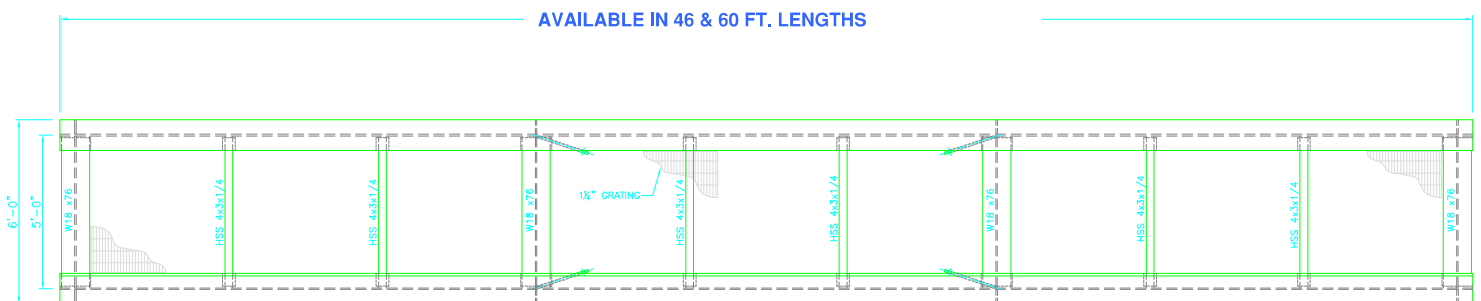
DECK PANEL APPLICATIONS

- Use as pipe rack either spanning the skid beams or overhead on elevated structures.
- Use as primary decking where allowable deck loading is too low for placing equipment.
- Ideal for temporary quarters or other equipment when set on cantilever beams.



LOADING VERSATILITY

- Loads up to 300 psf area loading.
- Loads up to 150 kips per longitudinal beam for uniformly distributed loads.
- Average lifting weight is 17,500 lbs. for the 46' panels and 22,500 lbs. for the 60' panels.



PLAN VIEW

HOUMA

985.274.2200

HOUSTON

281.741.8553